

Welcome to the next level in Roman Blinds... Elite by Hallis



Fitting Instructions

Tools you will need...

Hacksaw • Tape Measure • Spirit Level • Screwdriver • Pencil

how to... shorten the headrail...

Step 1. Move the spool along the profile until you have sufficient space to measure and cut to the desired width.

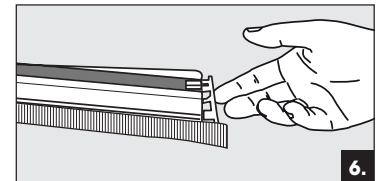
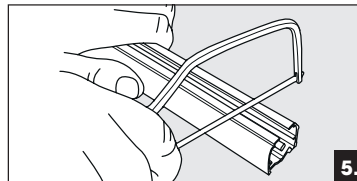
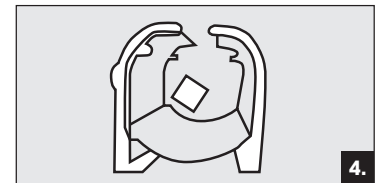
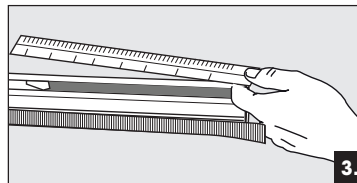
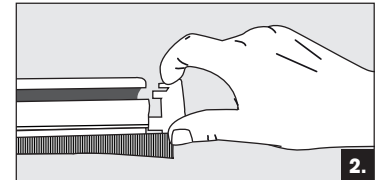
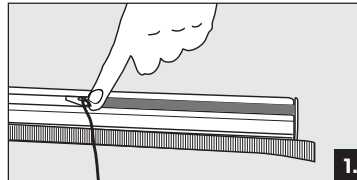
Step 2. Remove the end cap from the opposite end to the gear housing, this is the end of the profile you will be cutting.

Step 3. Measure and mark off the required width of the blind.

Step 4. Position the profile and axle rod.

Step 5. Cut down the profile and axle rod with a hacksaw.

Step 6. Replace the end cap.



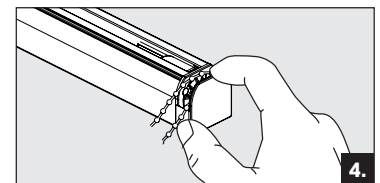
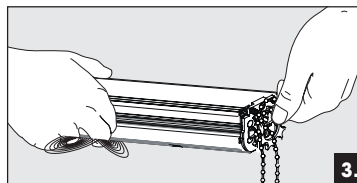
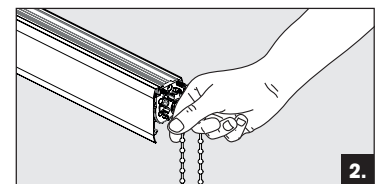
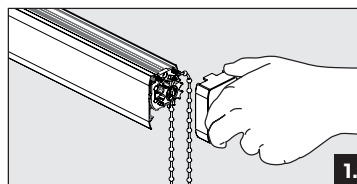
how to... remove and replace the chain...

Step 1. Remove the quick release end cap from the gear housing.

Step 2. Remove the current chain and replace with your chosen chain (size No. 10).

Step 3. Ensure the chain sits neatly within the housing.

Step 4. Re-fit the quick release gear housing cover ensuring it's firmly attached.



how to... install...

Step 1. The brackets should be positioned approximately 50mm in from the end of the headrail and evenly spread across the width of the blind.

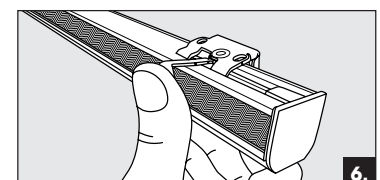
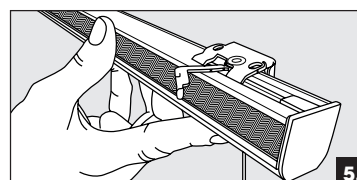
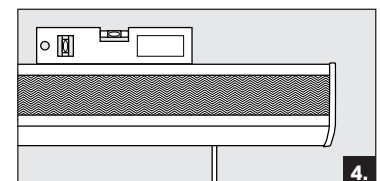
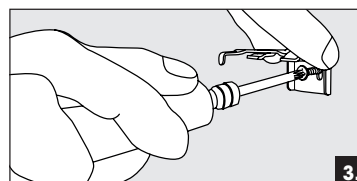
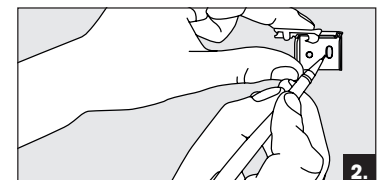
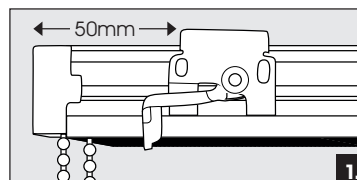
Step 2. Place the brackets in the desired position and mark the surface you are attaching to through the screw holes.

Step 3. Fix the brackets in place with the appropriate fixings for the type of surface.

Step 4. Use a spirit level to check and adjust the position of the brackets before fully tightening the screws.

Step 5. Hold the headrail up to the brackets, tilt forward and insert onto the brackets then tilt back until level.

Step 6. Once firmly in position press the lever until the headrail is locked in place.



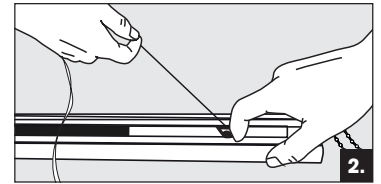
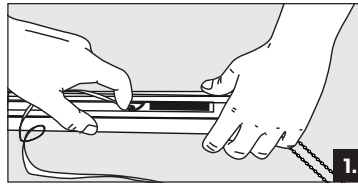
how to... attach the blind...

Step 1. Untighten the screws on the bridge of your spool

Step 2. Slide the spools into the desired position.

Step 3. Re-tighten the screws on the bridge of the spools ensuring they are firmly fixed into place.

Step 3. Attach the blind using hook and loop tape and press firmly into position.



how to... refit the breakaway cog and chain

Step 1: Refit the chain in the cog.

Step 2: Ensure the raised side with the small metal pin in the centre is facing outwards when re-fitting into the gear housing.

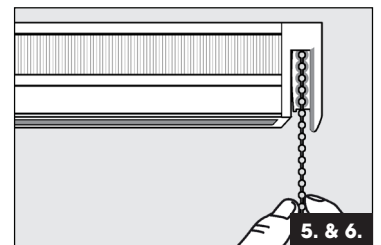
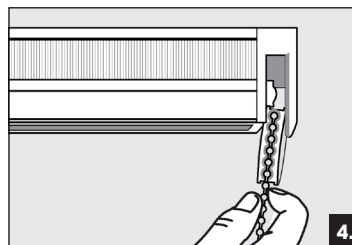
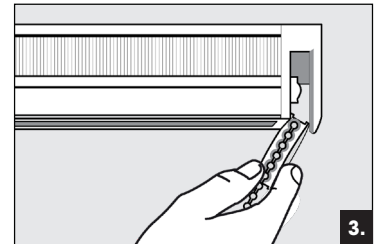
Step 3: Holding the cog and chain at an angle push the cog into the opening in the gear housing.

Step 4: Continue pushing the cog further in ensuring it clears the sprung loaded pin inside.

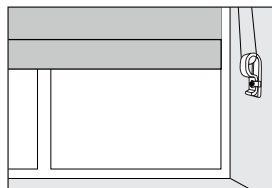
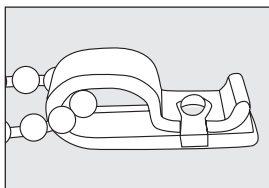
Step 5: Push the cog and chain all the way in until the spring-loaded pin clips in.

Step 6: You should hear an audible click to indicate it's been fitted correctly.

Step 7: Test your blind by raising and lowering a small amount to ensure the cog has been fitting correctly. If not operating as expected, please follow the steps again, ensuring you push the cog fully in, so it clears the sprung loaded pin inside.

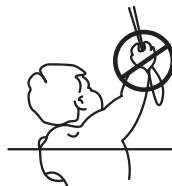


Fixed Tension Device child safety requirements ...



WARNING!

Young children can be strangled by loops in pull cords, chains, tapes and inner cords that operate the product. To avoid strangulation and entanglement, keep cords out of the reach of young children. Cords may become wrapped around a child's neck. Move beds, cots and furniture away from window covering cords. Do not tie cords together. Make sure cords do not twist and create loops.



Specific warning for non-integral devices

Children can strangle if this safety device is not installed. Always use this device to keep cords or chains out of reach of children.

Safety device fitting instructions...

Note The fixed retaining safety device must be installed at the maximum distance possible from the control mechanism to ensure that the chain remains taut.

Step 1. Screw the safety device to the wall using appropriate fixings for the surface you are fitting to.

WARNING! The distance from the floor to the bottom of the chain must be AT LEAST 150cm. Children can strangle if this safety device is not installed.

Step 2. Ensuring that the chain remains taut, place the chain into the safety device.

Step 3. Having checked that the bottom of the chain is at least 150cm from the floor, replace the safety device cover.

Step 4. Warning labels must be left on the chain for the notice of the end user.