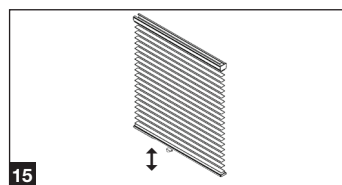
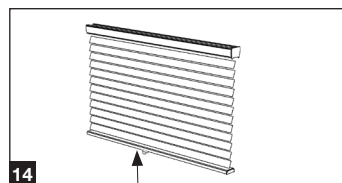
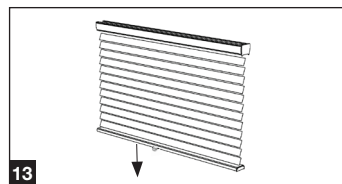


Operating the blind

1. To lower the blind
Grip the bottom clip and slowly pull straight down Fig. 13.
2. To Raise the blind
Put one hand under the bottom rail (Palm facing up) and lift with a slow steady tempo until the desired height is reached. Fig. 14.
3. To tilt the slats
Lower and raise the clip slowly. This is a learned technique, but takes only a few seconds to master Fig. 15.

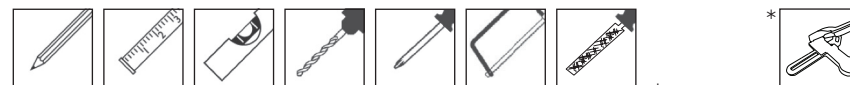


SWISH CORDLESS ALUMINIUM BLIND

Fitting Instructions

Please keep for future reference

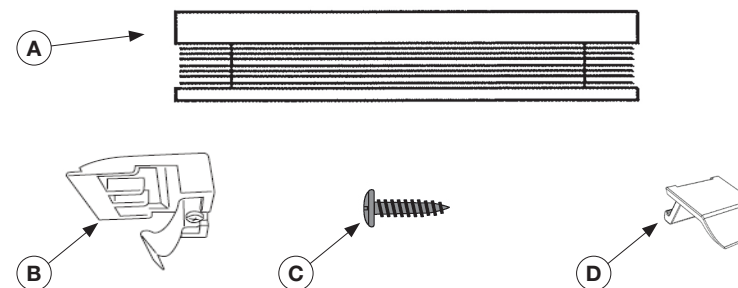
Tools required



* Item sold separately (product ref: SVSC.ND)

Please read these instructions carefully and check the contents of the pack before attempting to assemble and fix this product.

Pack Content



Parts		Width		
		45cm to 75cm	90cm to 135cm	150cm to 180cm
A	Blind	1	1	1
B	Bracket	2	3	4
C	Screws	4	6	8
D	Bottom rail clip	1	2	2

Should any component be missing, please call the Customer Care Department on **0330 005 2233**.

Safety Recommendation

Only use a Step Ladder to install this product.

DO NOT over reach. Always move the Step Ladder so that you are in a safe working position.
DO NOT hold or lean on the blind to support your weight.

We recommend you use two people for installation of larger blinds.

Take care when using power tools, use of a Residual Current Device (RCD) is recommended.

Always use eye protection when drilling. Beware of hidden pipe runs and cables.

No liability will be accepted for damage or injury caused by incorrectly installed or assembled product.

PLEASE KEEP OUT OF THE REACH OF YOUNG CHILDREN. SMALL PARTS - CHOKING HAZARD
PLEASE KEEP THESE INSTRUCTIONS AND THE BATCH CODE ON THE PACKAGING FOR FUTURE
REFERENCE IN CASE OF ANY QUERIES

Cutting the blind (If required)

1. Measure the width of the window recess as shown in Fig. 1.
2. Calculate the amount to cut (C). C is equal to the width of the blind minus the width of the window recess minus 1cm. Divide C by 2, you now have the amount to cut from each end.

3. Remove both caps from the headrail and from the bottom rail. Slide the slat fully out from the front of the headrail as shown Fig. 2.

Please note that the maximum you can cut the blind is 7.5cm each side, ensure an equal amount is cut from each end.

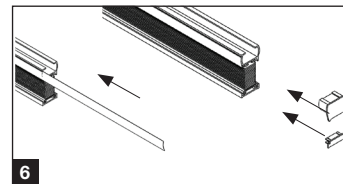
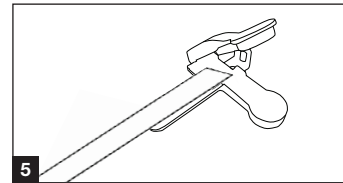
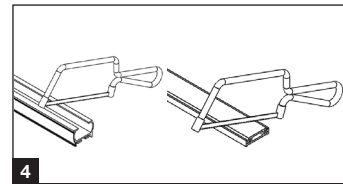
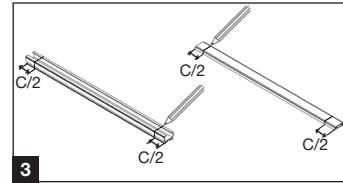
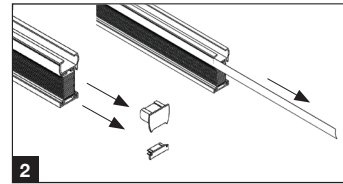
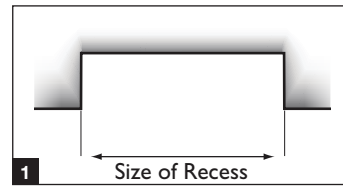
4. With the blind fully open and placed onto a flat surface, mark the cutting line on both ends of the headrail and bottom rail as shown Fig. 3. (The amount to be removed must not exceed 7.5cm each side.) Remove equal amounts from both sides.

It may be advisable for 2 people to complete this operation.

5. Using a hacksaw cut the headrail and the bottom rail as shown Fig. 4. Then use the file to deburr the cut end.

6. With a slat cutter (sold separately product ref: SVSC.ND) cut the slats individually as instructed on the slat cutter instructions Fig. 5. Ensure that each slat is cut to the same size as the headrail and the bottom rail.

7. Replace the top slat inside the headrail and the caps in the headrail and bottom rail Fig. 6.



Installing the blind

1. The blind can be wall or ceiling (top fixed) either inside or outside the recess. Blinds wider than 100cm are supplied with additional brackets. Brackets can not be fixed to a side wall.
2. To wall fix (Fig 7 & 8), the brackets should be fixed 8-10cm from each end of the headrail. If there are additional brackets (over 100cm), they should be evenly spaced.

3. Use a spirit level to ensure that the brackets are level.

4. To ceiling fix (Fig 9 & 10), ensure that you use the correct fixings. If in doubt consult your local builder or DIY store.

5. Once the brackets have been fitted, lift the headrail into position so that the front edge of each bracket is under the inner front edge of the head rail. Fig. 11a.
6. Push the headrail upwards until the flexible tab at the bottom of each bracket snaps onto the back of the head rail. Fig. 11b.
7. Check carefully to ensure that each bracket is properly secured. Fig. 11c.

8. Place the bottom rail clip onto the centre of the bottom rail, ensuring that it has clicked into place. Fig. 12. Where 2 bottom clips are supplied they should be fitted approximately 50cm from each end of the bottom rail.

