

EN GLYDEA2 ULTRA 50 WF Zigbee

Short installation guide

Original instructions

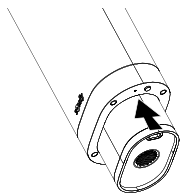
Complete instruction guide available online on www.somfy.info



For additional help, use the "Help me by Somfy" application (available on the App Store and Google Play).



At the product selection stage, scan this QR code



⚠ Do not unplug the battery when the drive works.

1 Start Up

To set the drive, download "TaHoma pro" application available on stores



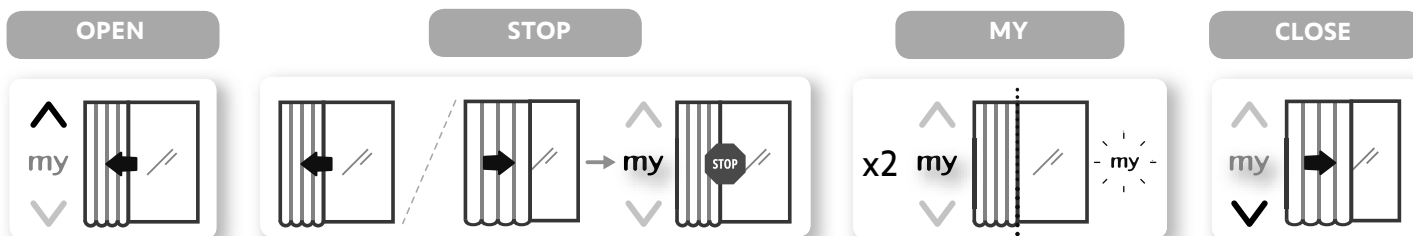
2 Drive setting

Once the "TaHoma pro" application is downloaded, open the app and follow the instructions to set the drive.

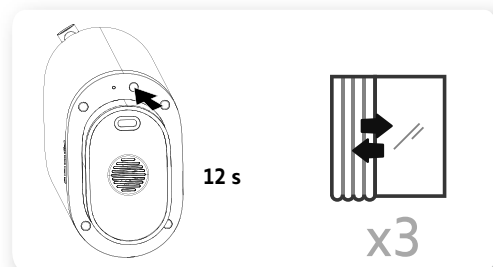


3 Use

This drive does not require any maintenance operation.



4 Drive resetting



⚠ This reset deletes all programmed control points, all end limit settings and resets the favourite (my) position for the drive. To reset the motor, press and hold the button until the motorised product moves 3 times: all the settings are erased.

INSTRUCTIONS TO BE RESPECTED

These instructions apply to all GLYDEA2 ULTRA 50 WF Zigbee drives, the different versions of which are available in the current catalogue.

FIELD OF APPLICATION

The Glydea Ultra drives are designed to drive all types of curtain track.

LIABILITY

Please read these instructions carefully before installing and using the drive. In addition to following the instructions given in this guide, the instructions detailed in the attached **Safety instructions** document must also be observed.

The drive must be installed by a motorisation and home automation professional, according to instructions from Somfy and the regulations applicable in the country in which it is commissioned. It is prohibited to use the drive outside the field of application described above. Such use, and any failure to comply with the instructions given in this guide and in the attached **Safety instructions** document, absolves Somfy of any liability and invalidates the warranty.

The installer must inform its customers of the operating and maintenance conditions for the drive and must provide them with the instructions for use and maintenance, and the attached **Safety instructions** document, after installing the drive. Any After-Sales Service operation on the drive must be performed by a motorisation and home automation professional.

If in doubt when installing the drive, or to obtain additional information, contact a Somfy adviser or go to the website www.somfy.com.



5183605A

somfy®

WARNING

To ensure electrical safety, this Class III drive must be powered by a «SELV» voltage source (Safety Extra Low Voltage).

The drive must be installed by a motorisation and home automation professional (for example electrical specialist according to DIN VDE 0100-100 for Germany), according to instructions from Somfy and the regulations applicable in the country in which it is commissioned.

Using this drive with any products which are not listed in the attached «Compatibility matrix» document shall also render invalid any Somfy warranty and release Somfy from any liability.

For the purposes of recharging the battery, only use the detachable supply unit provided with this appliance.
Improper using battery pack may cause overheat, fire, explosion, resulting in serious injury or death.

Do not expose the drive or battery to excessive temperatures.

There is a risk if terminals of the battery-operated drive or battery being short circuited by metal objects.

Ensure battery is fully charged prior to installation on site.

To increase the life of the battery, it is recommended to fully charge it every other year.

Frequency bands and Maximum power used	2.4 GHz - 2.4835 GHz e.r.p. <10mW
Power supply	21.9 V DC class 2 power supply SELV
Charging temperature	0° to 40°C



The Bluetooth® word mark and logos are registered trademarks owned by the Bluetooth SIG, Inc. and any use of such marks by SOMFY ACTIVITES SA is under license. Other trademarks and trade names are those of their respective owners.

Apple and Apple logos are trademarks of Apple, Inc., registered in the U.S. and other countries.

iPad® and iPhone® are registered trademarks of Apple, Inc. App Store is a service mark of Apple Inc.

Android is a trademark of Google LLC.

<https://developer.android.com/distribute/marketing-tools/brand-guidelines>



Please separate storage cells and batteries from other types of waste and recycle them via the local collection facility.



We care about our environment. Do not dispose of the appliance with usual household waste. Give it to an approved collection point for recycling.



SOMFY ACTIVITES SA, 74300 CLUSES FRANCE as manufacturer hereby declares that the drive covered by these instructions and used as intended according to these instructions is in compliance with the essential requirements of the applicable European Directives and in particular of the Machinery Directive 2006/42/EC, and the Radio Directive 2014/53/EU. The full text of the EU declaration of conformity is available at www.somfy.com/ce. Philippe Geoffroy, Approval manager, acting on behalf of Activity director, Cluses, 02/2025.



Somfy limited, Yeadon LS19 7ZA UK hereby declares that the drive covered by these instructions when marked for input voltage 21.9 V DC and used as intended according to these instructions, is in compliance with UK legislation of Machinery safety regulations S.I.2008 N°1597 and the Radio Equipment Regulations S.I. 2017 N°1206. The full text of the UKCA declaration of conformity is available at www.somfy.co.uk. Steven MONTGOMERY, Managing Director Somfy Ltd UK & Ireland, Yeadon, 02/2025.