



5162816B

EN

Irismo wirefree 45 RTS

Short installation guide
ORIGINAL INSTRUCTIONS

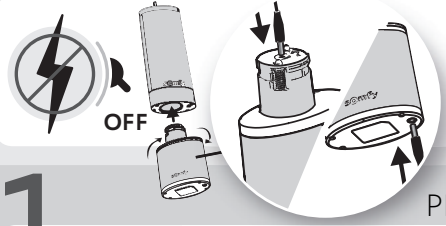
Complete instruction guide available online on www.somfy.info



From the Application "Help me by Somfy" scan the QR code here to find complete setting instructions.



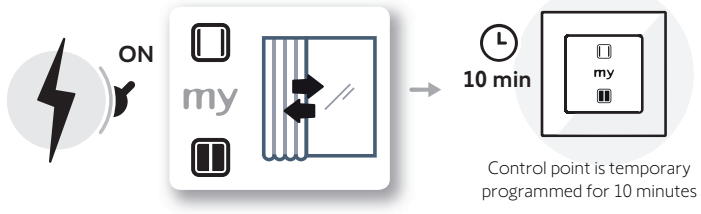
"Help me by Somfy" available on stores



References	Type
1003184	Power adaptor 0.6 DC - 230 V / 29.4 V EU ME
1003080	Power adaptor 0.6 DC - 230 V / 29.4 V CN (US)

1

PREPROGRAMMING A CONTROL POINT



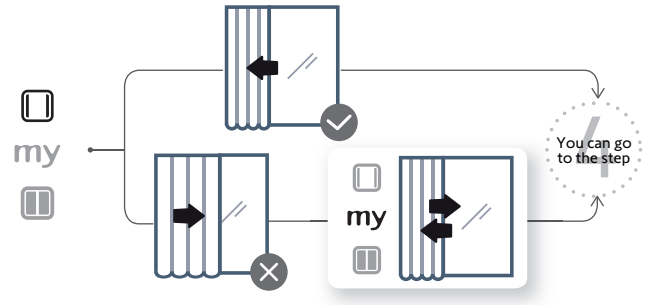
2

END LIMITS SETTING

At the first command Open or Close, the motorised product make a first run to record the hard stop position.

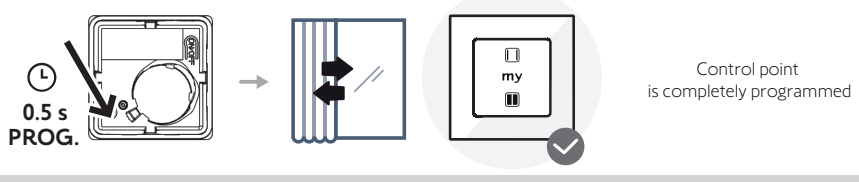
3

DIRECTION OF ROTATION



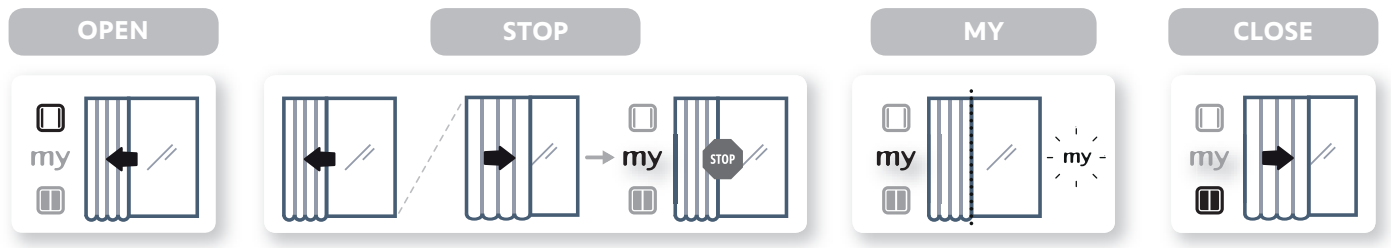
4

PAIRING

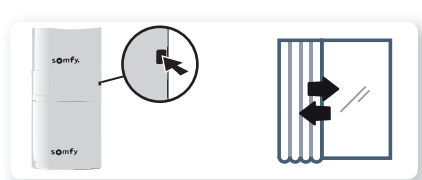


USE

This drive does not require any maintenance operation.



DRIVE RESETTING



This reset deletes all programmed control points, all sensors, all end limit settings and resets the favourite (my) position for the drive. To reset the drive, press and hold the LED button until the motorised product moves 3 times. All the settings are erased.

INSTRUCTIONS TO BE RESPECTED

These instructions apply to all Irismo wirefree 45 RTS drives, the different versions of which are available in the current catalogue.

FIELD OF APPLICATION

The Irismo drives are designed to drive all types of curtain track.

LIABILITY

Please read these instructions carefully before installing and using the drive. In addition to following the instructions given in this guide, the instructions detailed in the attached **Safety instructions** document must also be observed.

The drive must be installed by a motorisation and home automation professional, according to instructions from Somfy and the regulations applicable in the country in which it is commissioned.

It is prohibited to use the drive outside the field of application described above. Such use, and any failure to comply with the instructions given in this guide and in the attached **Safety instructions** document, absolves Somfy of any liability and invalidates the warranty.

The installer must inform its customers of the operating and maintenance conditions for the drive and must provide them with the instructions for use and maintenance, and the attached **Safety instructions** document, after installing the drive.

Any After-Sales Service operation on the drive must be performed by a motorisation and home automation professional.

If in doubt when installing the drive, or to obtain additional information, contact a Somfy adviser or go to the website www.somfy.com.

SAFETY INSTRUCTIONS FOR WIRING



Cables which pass through a metal wall must be protected and isolated using a sheath or sleeve.



Attach cables to prevent any contact with moving parts.



If the drive is used outdoors, and if the power supply cable is a type H05VV-F cable, the cable should be installed in a UV-resistant duct, e.g. under a gland.



Leave the drive power supply cable accessible: the product must be easily replaceable.



Always make a loop in the power supply cable to prevent water entering the drive.

The drive must be installed by a motorisation and home automation professional (for example electrical specialist according to DIN VDE 0100-100 for Germany), according to instructions from Somfy and the regulations applicable in the country in which it is commissioned.

To increase the life of the battery, it is recommended to fully charge it every other year.

Frequency bands and Maximum power used

433.050 MHz - 434.790 MHz e.r.p. <10 mW.

Power supply

26.5 V DC battery or SELV external power supply

Charging temperature

0°C to 60°C



We care about our environment. Do not dispose of the appliance with usual household waste. Give it to an approved collection point for recycling.



Please separate storage cells and batteries from other types of waste and recycle them via the local collection facility.



SOMFY ACTIVITES SA, 74300 CLUSES FRANCE as manufacturer hereby declares that the drive covered by these instructions and used as intended according to these instructions is in compliance with the essential requirements of the applicable European Directives and in particular of the Machinery Directive 2006/42/EC, and the Radio Directive 2014/53/EU. The full text of the EU declaration of conformity is available at www.somfy.com/ce. Philippe Geoffroy, Approval manager, acting on behalf of Activity director, Cluses, 02/2025.



Somfy limited, Yeadon LS19 7ZA UK hereby declares that the drive covered by these instructions when marked for input voltage 26.5 V DC and used as intended according to these instructions, is in compliance with UK legislation of Machinery safety regulations S.I.2008 N°1597 and the Radio Equipment Regulations S.I. 2017 N°1206. The full text of the UKCA declaration of conformity is available at www.somfy.co.uk. Steven MONTGOMERY, Managing Director Somfy Ltd UK & Ireland, Yeadon, 02/2025.