



5162945A

EN

Movelite RTSShort installation guide
ORIGINAL INSTRUCTIONSComplete instruction guide available online on www.somfy.info**somfy**From the Application
"Help me by Somfy"
scan the QR code
here to find complete
setting instructions.

100 - 240 V ~ 50 - 60 Hz

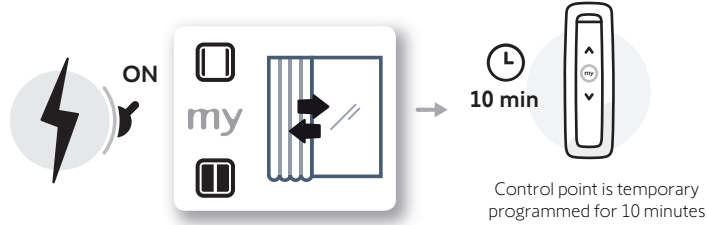
L Brown

N Blue

Green-Yellow

"Help me by Somfy"
available on stores**1**

PREPROGRAMMING A CONTROL POINT

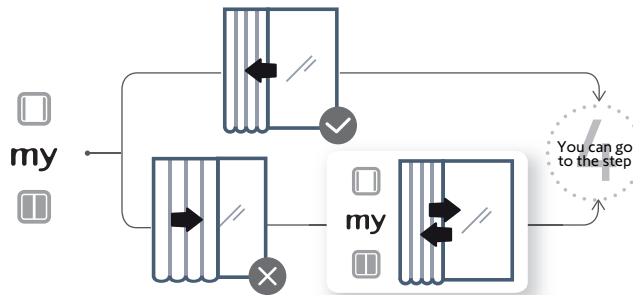
**2**

END LIMITS SETTING

At the first command Open or Close, the motorised product make a first run to record the hard stop position.

3

DIRECTION OF ROTATION

**4**

PAIRING



USE

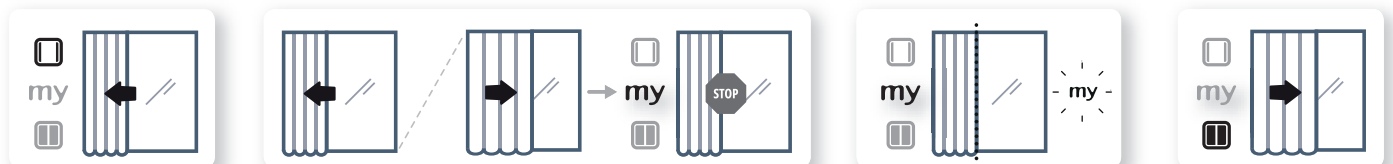
This drive does not require any maintenance operation.

OPEN

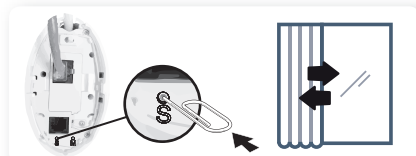
STOP

MY

CLOSE



DRIVE RESETTING



This reset deletes all programmed control points, all sensors, all end limit settings and resets the favourite (my) position for the drive.

To reset the motor, use a pin to press and hold the S button until the motorised product moves 3 times.

All the settings are erased.

INSTRUCTIONS TO BE RESPECTED

These instructions apply to all Movelite RTS drive, the different versions of which are available in the current catalogue.

FIELD OF APPLICATION

The Movelite drives are designed to drive all types of curtain track.

LIABILITY

Please read these instructions carefully before installing and using the drive. In addition to following the instructions given in this guide, the instructions detailed in the attached **Safety instructions** document must also be observed.

The drive must be installed by a motorisation and home automation professional, according to instructions from Somfy and the regulations applicable in the country in which it is commissioned.

It is prohibited to use the drive outside the field of application described above. Such use, and any failure to comply with the instructions given in this guide and in the attached **Safety instructions** document, absolves Somfy of any liability and invalidates the warranty.

The drive must be installed by a professionally qualified person (electrical specialist according to DIN VDE 1000-10) for drives and automations in the building services sector in accordance with the Somfy instructions and the applicable regulations in the country of commissioning.

The installer must inform its customers of the operating and maintenance conditions for the drive and must provide them with the instructions for use and maintenance, and the attached **Safety instructions** document, after installing the drive.

Any After-Sales Service operation on the drive must be performed by a motorisation and home automation professional.

If in doubt when installing the drive, or to obtain additional information, contact a Somfy adviser or go to the website www.somfy.com.

SAFETY INSTRUCTIONS FOR WIRING



Cables which pass through a metal wall must be protected and isolated using a sheath or sleeve.



Attach cables to prevent any contact with moving parts.



If the drive is used outdoors, and if the power supply cable is a type H05-VVF cable, the cable should be installed in a UV-resistant duct, e.g. under a gland.



Leave the drive power supply cable accessible: it must be possible to replace it easily.



Always make a loop in the power supply cable to prevent water entering the drive.

Frequency bands and Maximum power used

433.050 MHz - 434.790 MHz e.r.p. <10 mW.

Power supply

100 V - 230 V / 50 Hz - 60 Hz



SOMFY ACTIVITES SA, 74300 CLUSES FRANCE as manufacturer hereby declares that the drive covered by these instructions when marked for input voltage 230V~50Hz and used as intended according to these instructions, is in compliance with the essential requirements of the applicable European Directives and in particular of the Machinery Directive 2006/42/EC, and the Radio Directive 2014/53/EU. The full text of the EU declaration of conformity is available at www.somfy.com/ce. Philippe Geoffroy, Approval manager, acting on behalf of Activity director, Cluses, 05/2022.



We care about our environment. Do not dispose of the appliance with usual household waste. Give it to an approved collection point for recycling.



Please separate storage cells and batteries from other types of waste and recycle them via the local collection facility.



Somfy limited, Yeadon LS19 7ZA UK hereby declares that the drive covered by these instructions when marked for input voltage 230V~50Hz and used as intended according to these instructions, is in compliance with UK legislation of Machinery safety regulations S.I.2008 N°1597 and the Radio Equipment Regulations S.I. 2017 N°1206. The full text of the UKCA declaration of conformity is available at www.somfy.co.uk. Steven MONTGOMERY, Managing Director Somfy Ltd UK & Ireland, Yeadon, 05/2022.