

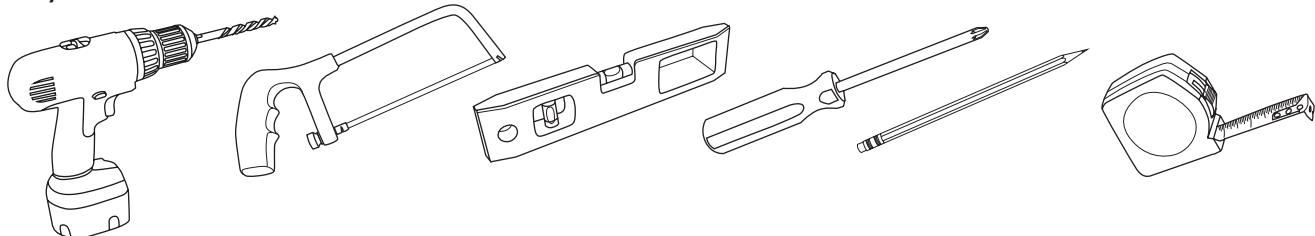
# Perspectives Roman Blind System

# PERSPECTIVES

## ROMAN BLIND SYSTEM

## Kits and Profiles Instructions

### Tools you will need...



Drill

Hacksaw

Spirit Level

Screwdriver

Pencil

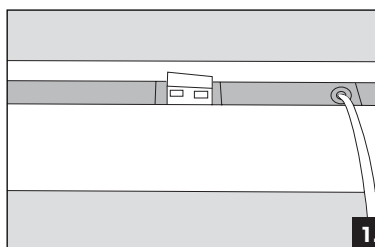
Tape Measure

### how to...

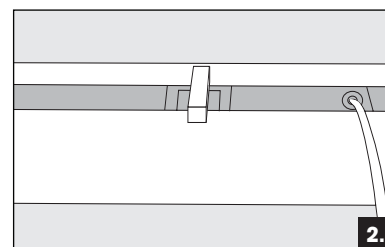
#### adjust your spools...

**Step 1:** Twist the clear tab on the top of the spool 90 degrees to allow the spool to run freely inside the headrail.

**Step 2:** When your spool is in the desired position, twist the clear tab back to lock the spool in position.



1.



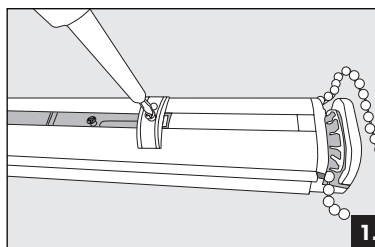
2.

### how to...

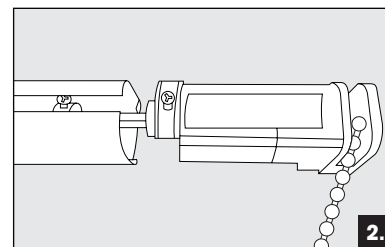
#### change your gear housing side...

**Step 1:** Using a Phillips screwdriver loosen the bridge on the top of the headrail (This is used to secure the spool to the headrail).

**Step 2:** Remove the gear housing from the headrail.



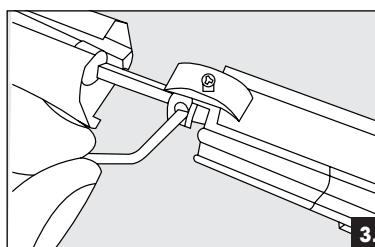
1.



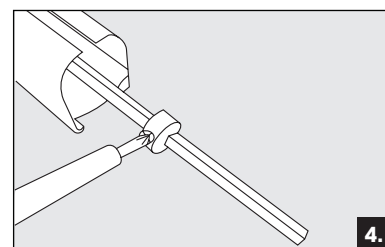
2.

**Step 3:** Using a 4mm Allen Key undo the grub screw on the end of the gear housing. You can then remove it from the axle rod.

**Step 4:** Using your Phillips screwdriver undo the lock ring and remove it from the gear housing.



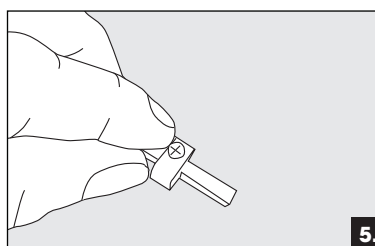
3.



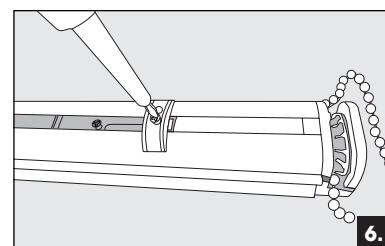
4.

**Step 5:** Re-fit the lock ring on the opposite end of your roman blind, position this where you would like your first spool to finish.

**Step 6:** Repeat steps 2 to 4 then re-tighten the bridge to secure the gear housing to the headrail.



5.



6.

## how to... remove and replace the chain...

**Step 1:** Remove the chain from the breakaway gear housing.

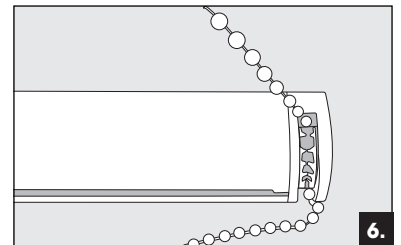
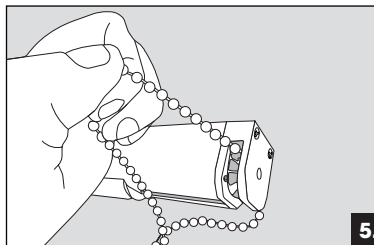
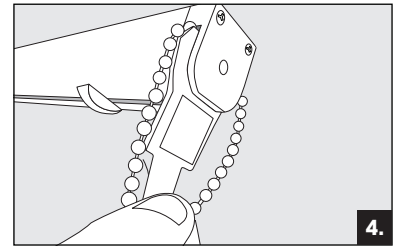
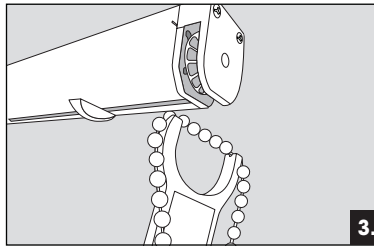
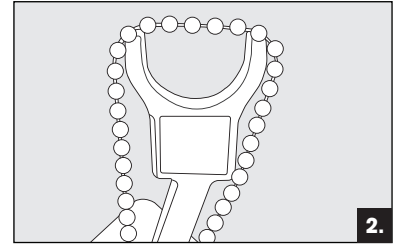
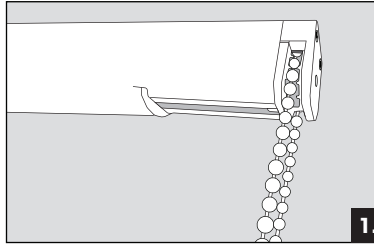
**Step 2:** Using the fitting tool provide insert the chain into either end of the cups.

**Step 3:** Hold both the chain and the fitting tool securely and push the chain in between the breakaway cogs inside the gear housing.

**Step 4:** Insert the chain all the way in the gear housing.

**Step 5:** Lift the chain up until you can see that it is fully in between both cogs.

**Step 6:** You should hear a click as both cogs join back together.



## how to... fit the brackets...

**Step 1:** The brackets should be fitted approximately 5cm from the end of the blind.

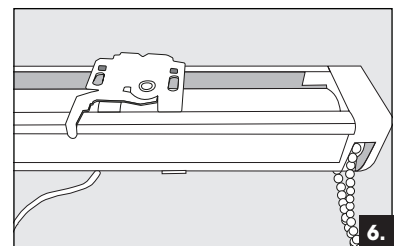
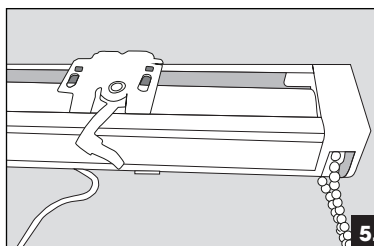
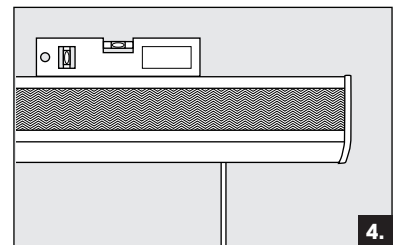
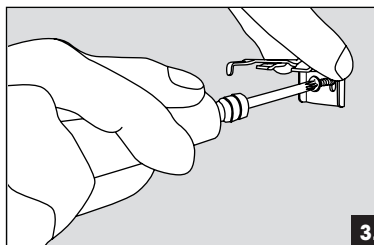
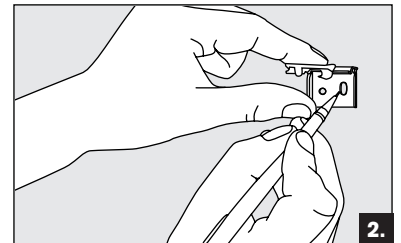
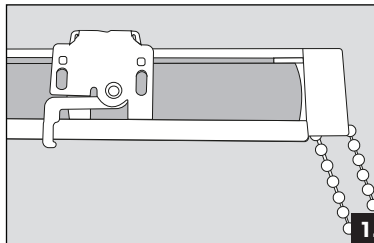
**Step 2:** Place the brackets in the desired position and mark the surface you are attaching to through the screw holes.

**Step 3:** Fix the brackets in place with the appropriate fixings for the type of surface.

**Step 4:** Use a spirit level to check and adjust the position of the brackets before fully tightening the screws.

**Step 5:** Hold the headrail up to the brackets, tilt forward and insert onto the brackets then tilt back until level.

**Step 6:** Push the lever all the way in until it sits flush with the headrail.



how to...

## shorten the headrail...

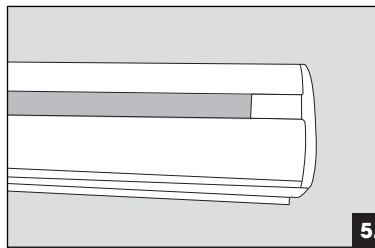
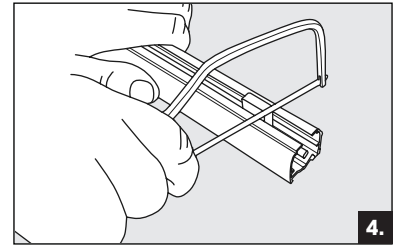
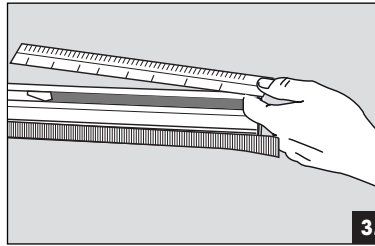
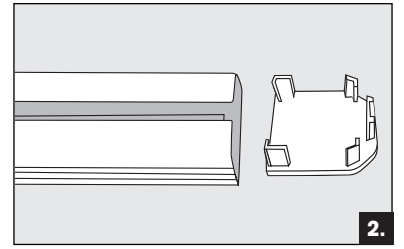
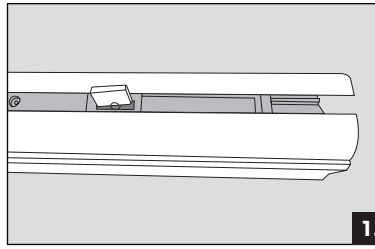
**Step 1:** Rotate the clear tab on the spool by 90 degrees and slide the spool out of the way.

**Step 2:** Remove the end cap from the opposite end to the gear housing.

**Step 3:** Measure and mark off the required width of the blind.

**Step 4:** Cut down the profile and axle rod with a hacksaw.

**Step 5:** Re-fit the end cap.



**HALLIS HUDSON**  
*Committed to excellence*